

SUBJECT: Sorter/DJF Installation

DATE: September 15, '95

PAGE: 1 of 2

PREPARED BY: N. Kaiya

FROM: 2nd Technical Support Section

CHECKED BY: M. Iwasa

CLASSIFICATION:

☒ Action Required

☐ Troubleshooting

☐ Retrofit Information

☐ Revision of service manual

☐ Information only

☐ Other

MODEL:

DFC - α

To comply with the CE mark, it is necessary to attach five ferrite cores when installing a sorter on DFC - α . The ferrite cores have been enclosed in the screw bag of the DFC - α from September production. Please refer to the following for the installation procedure of the ferrite cores.

Additional procedure for sorter installation

Ferrite core P/N 16070418 4 pcs.

Ferrite core P/N 16070721 1 pc.

1. Turn off the main switch and unplug the machine.

2. Remove the sorter top cover (3 screws).

3. Remove the sorter rear cover (4 screws).

4. Attach the ferrite core ([A] P/N 16070721) to the DC harness as shown.

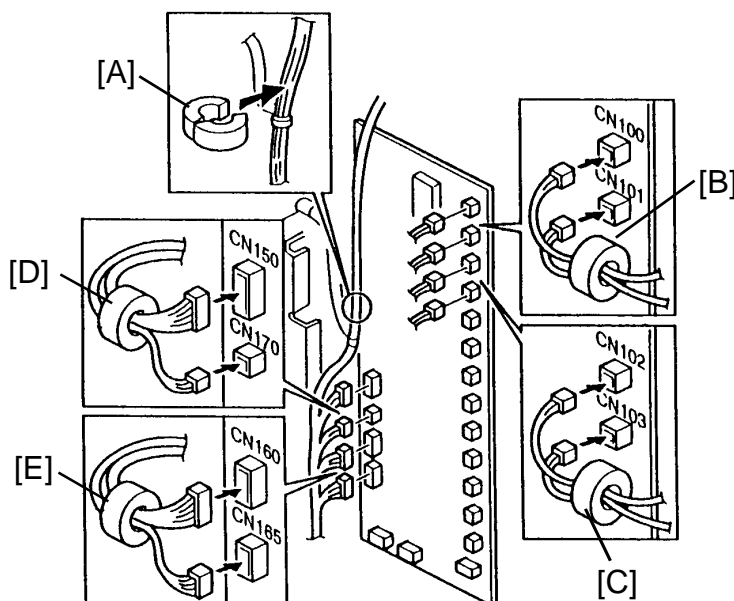
5. Remove the harnesses for second bin solenoid (CN100) and third bin solenoid (CN101). Pass the both harnesses through the ferrite core ([B] P/N 16070418) and reconnect them to the sorter main board.

6. Remove the harnesses for the fourth bin solenoid (CN102) and the fifth bin solenoid (CN103). Pass the both harnesses through the ferrite core ([C] P/N 16070418) and reconnect them to the sorter main board.

7. Remove the harnesses for the encoder (CN150) and the entry sensor LED (CN170). Pass the both harnesses through the ferrite core ([D] P/N 16070418) and reconnect them to the sorter main board.

8. Remove the harnesses for the entry sensor Phototransistor (CN160) and the inlet sensor (CN165). Pass the both harnesses through the ferrite core ([E] P/N 16070418) and reconnect them to the sorter main board.

9. Reassemble the unit.

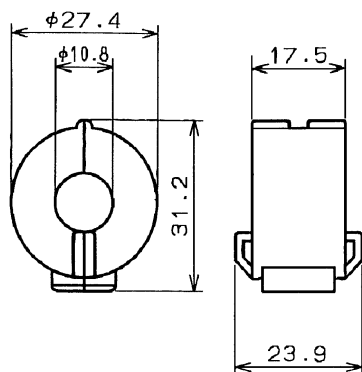


SUBJECT: Sorter/DJF Installation

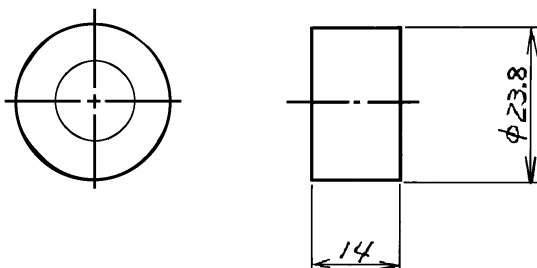
DATE: September 15, '95
PAGE: 2 of 2

Ferrite Cores Packed with DFC - α

For Sorter Installation

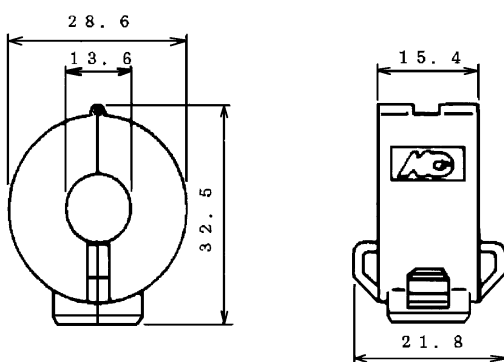


P/N 16070721

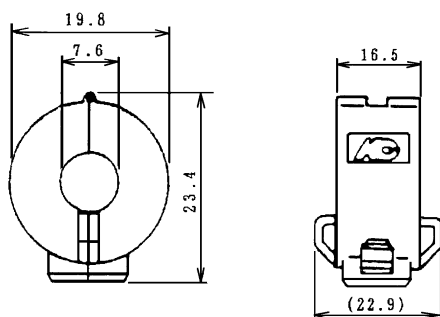


P/N 16070418

For DJF installation



P/N 16070638



P/N 16070623